



Investor Presentation

Disclaimer

Certain statements contained in this presentation constitute "forward-looking statements" within the meaning of applicable Canadian securities legislation. Such forward-looking statements herein may include but are not limited to: the ultimate exercise of its option to acquire 100% of Sela Creek, strategic plans and expectations for the exploration and/or development of Miata Metals Corp.'s ("Miata", or "the Company") mineral property interests; costs, metal price assumptions, drilling and metal grade results, cash flow forecasts, internal rate of return, projected capital and operating costs; gold recoveries and production rates.

Such forward-looking statements or information are based on a number of assumptions which may prove to be incorrect. Assumptions have been made regarding, among other things: conditions in general economic and financial markets; availability to realize historical technical data and develop and finance the projects; accuracy of the interpretations and assumptions used in calculating mineral resource estimates; availability of mining equipment; availability of skilled labour; timing and amount of capital expenditures; laboratory and other related services are available and perform as contracted; effects of regulation by governmental agencies; and future operating costs.

The actual results could differ materially from those anticipated in these forward looking statements as a result of the risk factors set forth below and elsewhere in this presentation: the availability of funds; the timing and content of work programs; results of exploration activities and development of the mineral property; the interpretation of drilling results and other geological data; the uncertainties of resource estimations; project cost overruns or unanticipated costs and expense; uncertainty as to actual capital costs, operating costs, production and economic returns and uncertainty that exploration will result in a economic or viable project at any of the Company's projects, fluctuations in commodity prices and currency, political and economic risks and general market and industry conditions.

Forward-looking statements are based on the expectations and opinions of the Company's management on the date the statements are made. The assumptions used in the preparation of such statements, although considered reasonable at the time of preparation, may prove to be imprecise and, as such, readers are cautioned not to place undue reliance on these forward-looking statements, which speak only as of the date the statements were made. The Company undertakes no obligation to update or revise any forward-looking statements included in this presentation if these beliefs, estimates and opinions or other circumstances should change, except as otherwise required by applicable law. No securities commission or regulatory authority has reviewed the accuracy or adequacy of the information presented.

QUALIFIED PERSON. Under National Instrument (NI 43-101) Standards of Disclosure for Mineral Projects, the Qualified Person for this presentation is Danae Voormeij, M.Sc., P.Geo., a director of the Company, who has reviewed and approved its contents.

Option to own 100% of two orogenic gold projects



Strong In-Country Relationships



Suriname: A New Gold Hotspot in the Guiana Shield Experienced Team



Experienced Team



Active 10,000m drill program



Two orogenic gold Projects in prolific greenstone belt of Suriname

ROSEBEL MINE 3.5 MOZ AU
Zijin



MERIAN MINE 3.9 MOZ AU
Newmont

NASSAU

70% owned, option to 100%
200km², orogenic gold

SELA CREEK

Active 10,000m drill program
70% owned, option to 100%
215km², orogenic gold



0 50 100 km



Guiana Shield

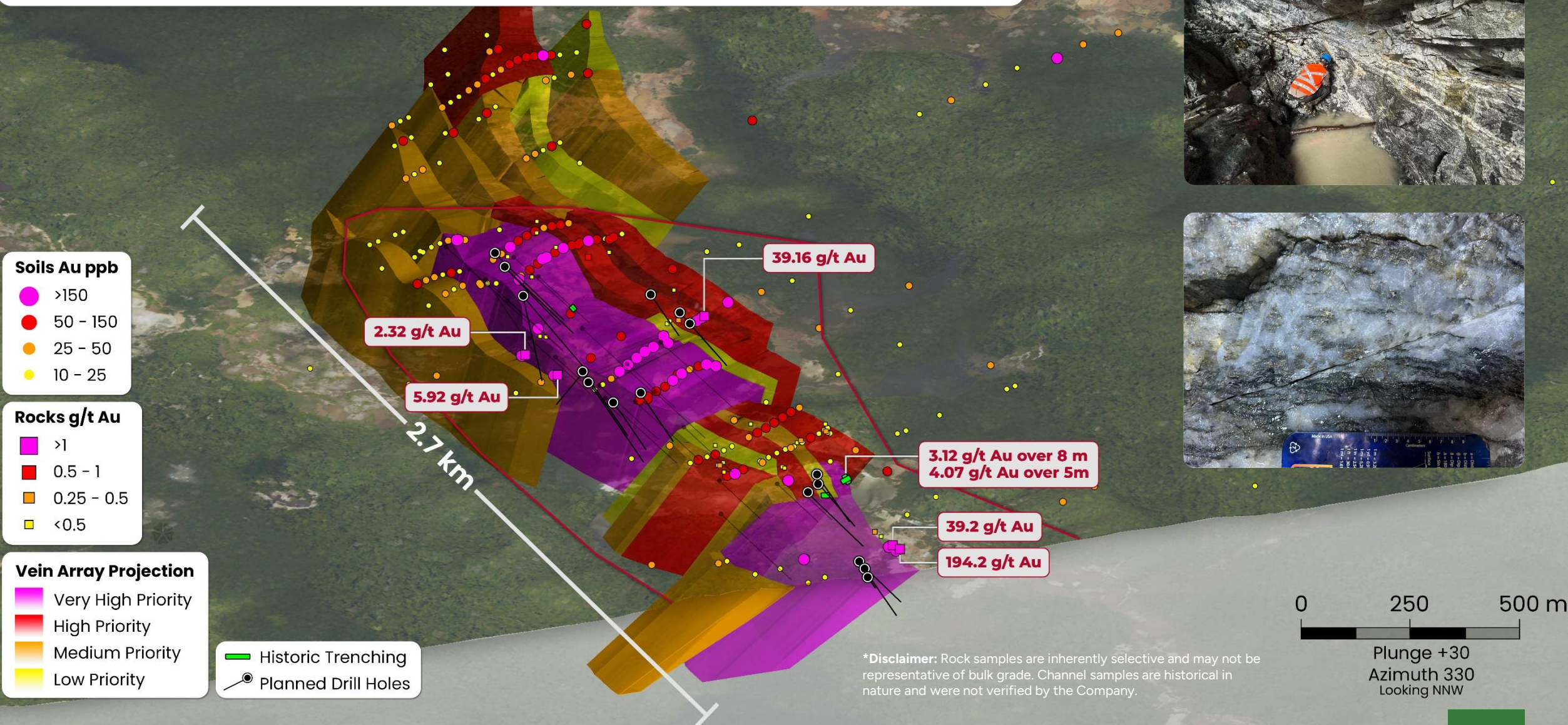
SURINAME

SOUTH AMERICA

SURINAME

Antino
Founders Metals

Currently Drilling 2.7km long Puma Target



Miata Metals

Corporate Snapshot

2025 CATALYST

Active discovery drill program	Start Q1 2025
--------------------------------	---------------

RESEARCH COVERAGE

Agentis Capital	Michael Gray
Cormark Securities	Nicolas Dion

CAPITAL STRUCTURE

Shares Outstanding	79,199,622
Warrants and Options	30,704,335
Fully Diluted Shares Outstanding	109,903,957

OWNERSHIP AND CAPITAL STRUCTURE

~\$18M

Market Cap

\$0.23

Share Price on
Sept 1st, 2025

~\$5.4M

Cash Position as of
September 1st, 2025

22%

Management
and Founders %

Management



Dr. Jaap Verbaas, PGeo.
CEO, DIRECTOR

Dr. Jaap Verbaas is a Dutch-Canadian geologist that has led both grassroots and brownfields programs, with a focus on regional targeting and undervalued asset acquisition. Jaap holds a Ph.D. from Simon Fraser University.



Danae Voormeij, MSc, PGeo
DIRECTOR

Danae Voormeij is a gold exploration geologist with two decades of field and leadership experience across Africa, the Americas, and the South Pacific. She led the discovery of the Tuzon deposit in Liberia and authored a well-known textbook on tropical gold exploration.



Dr. Luke Bickerton, PhD
VP EXPLORATION

Luke Bickerton holds a Ph.D. in Mineral Deposits and Precambrian Geology. Known for translating complex science into practical insight, he supports industry innovation through communication, collaboration, and technical depth.



James Reid, CPA, CA
DIRECTOR

James is a Managing Partner at Three Peaks Capital. He brings strong capital markets insight, with expertise in valuation, deal structuring, and fundraising.



John Wenger, CPA, CA
CFO

John Wenger served as CFO of Contact Gold and Liberty Gold, helping raise over \$100M and complete multiple acquisitions. Formerly with Ernst & Young, John has deep expertise in public company reporting, corporate strategy, and capital markets.



Danny Matthews, JD
DIRECTOR

Danny Matthews is Managing Partner at Three Peaks Capital. With a background in law and capital markets, he advises portfolio companies on corporate strategy, transactions, and governance. Danny holds a JD from Western and is called to the BC Bar.

Sela Creek

Exploration guided by over 100 years
of small-scale mining



22 km

SELA CREEK

SURINAME

**FRENCH
GUIANA**

Benzdorp

- 215km² Orogenic Gold Project
- Artisanal mining footprint indicates 14 km strike length gold system
- River landing and road access

 **ANTINO**
Founders Metals

Referenced nearby projects, deposits and mines provide geologic context for the Sela Creek and Nassau properties, but are not necessarily indicative that they hosts similar potential, size or grades of mineralization.

Discovery Drill Program in Progress

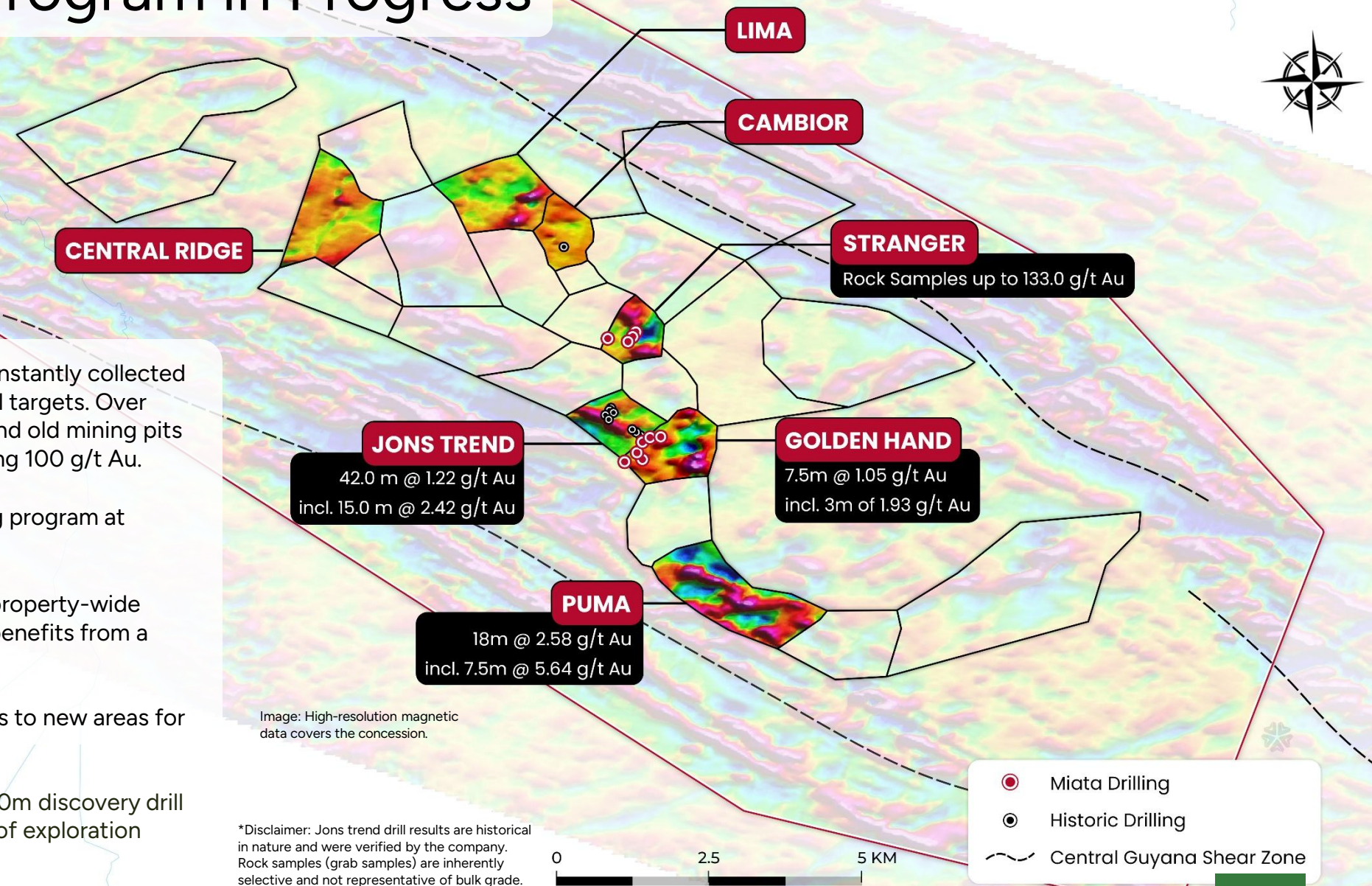
Mapping & Sampling: Structural data is constantly collected in new and old mining pits to refine the drill targets. Over 250 samples have been collected in new and old mining pits with some selective grab samples exceeding 100 g/t Au.

Trenching: Miata has an ongoing trenching program at Puma Target

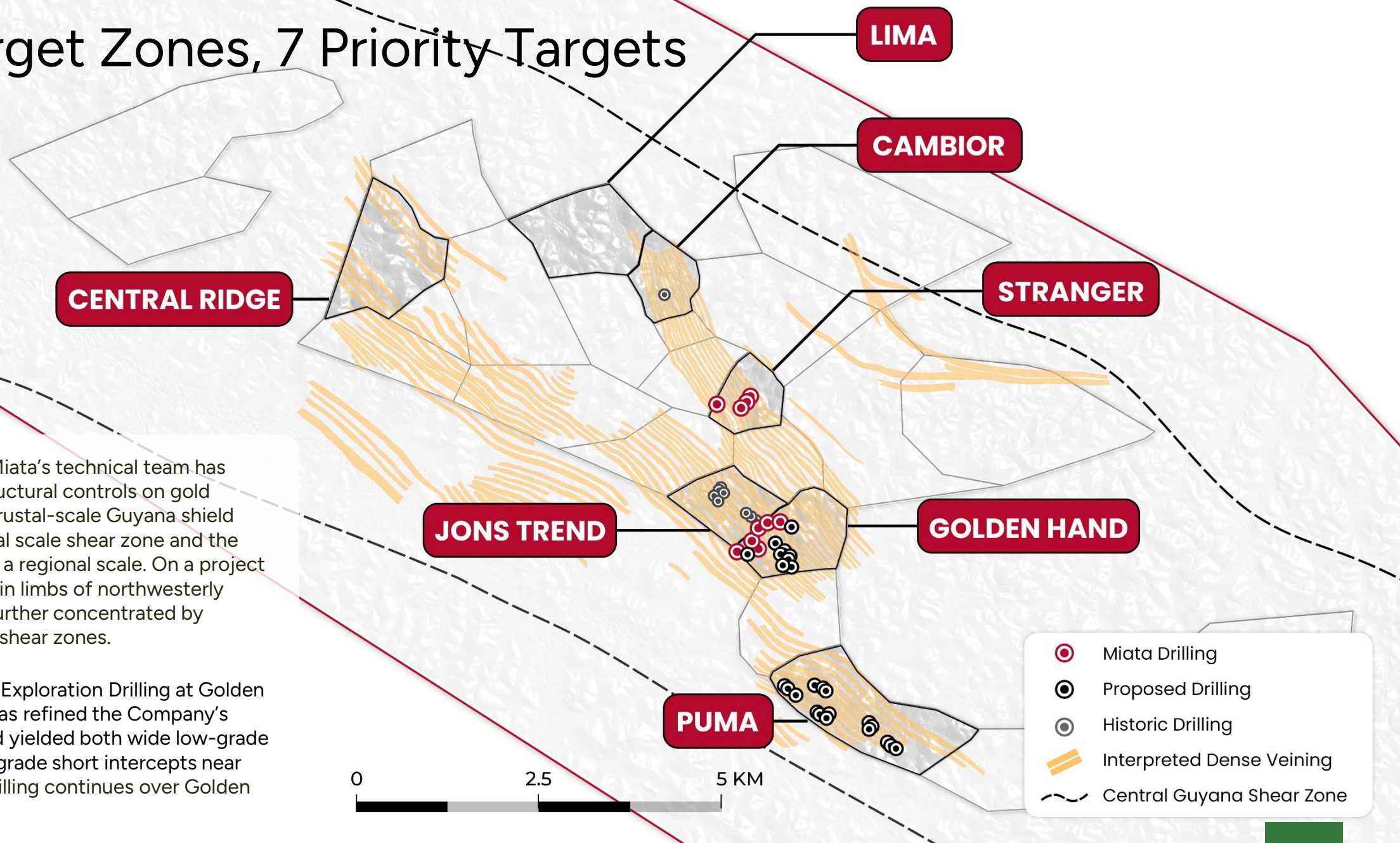
Geophysics: The Company has collected property-wide LiDAR and orthophoto data in 2024, and benefits from a historical magnetic survey.

Access: Ongoing road work to open access to new areas for drilling and surface work.

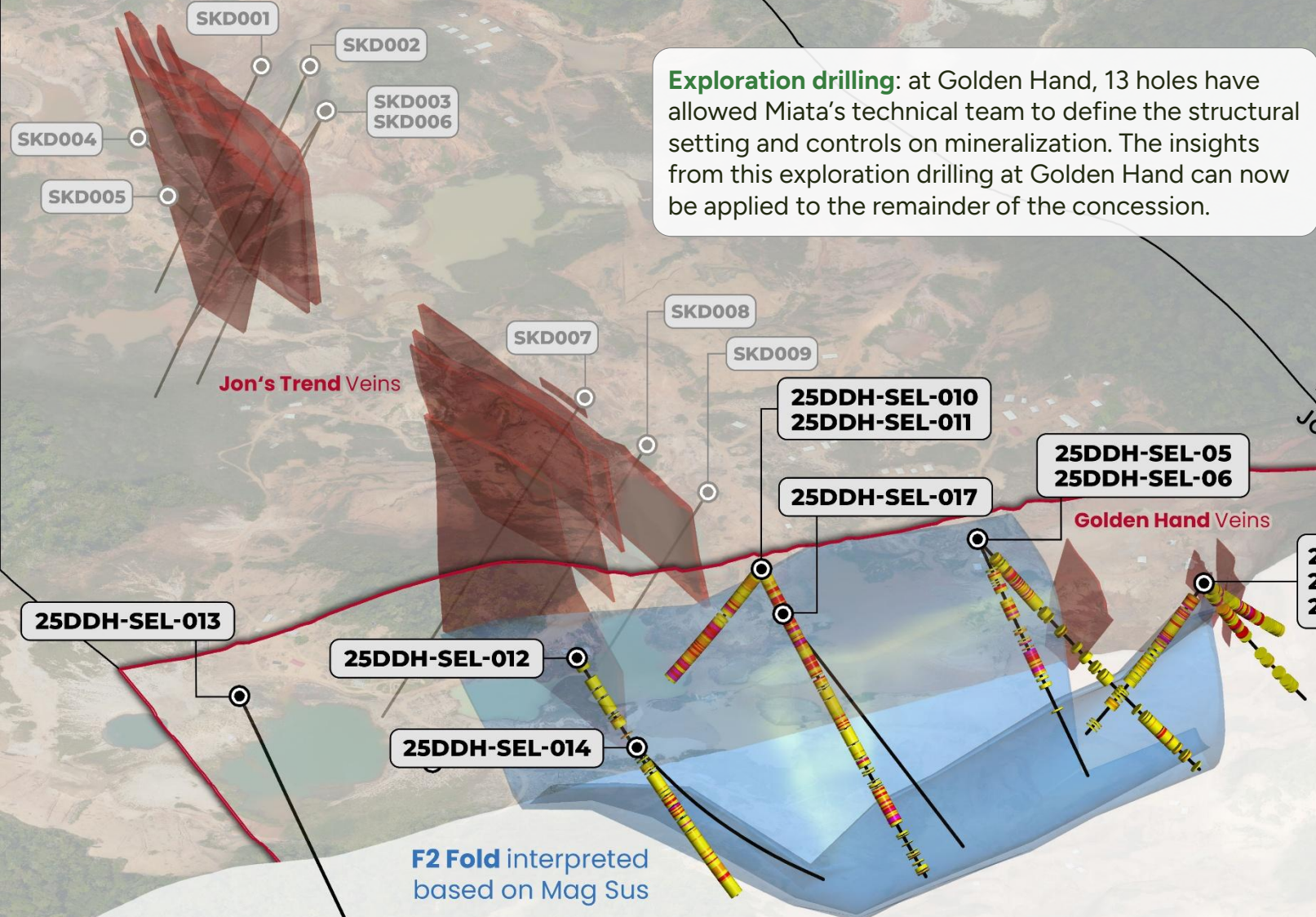
Drilling: The Company has an active 10,000m discovery drill program and has completed over 2,000m of exploration drilling at Stranger and Golden Hand



26 Target Zones, 7 Priority Targets



Active 10,000m discovery drill program



Exploration drilling: at Golden Hand, 13 holes have allowed Miata's technical team to define the structural setting and controls on mineralization. The insights from this exploration drilling at Golden Hand can now be applied to the remainder of the concession.

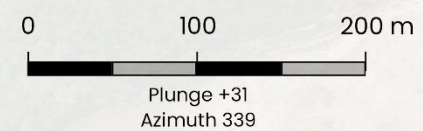
25DDH-SEL-006: 4.63 g/t Au over 2 m from 103m



25DDH-SEL-009: 5.46 g/t Au over 1.5 m from 19.3m



- Assays (Au g/t)**
- 0.5+
 - 0.1 - 0.5
 - 0.05 - 0.1
 - 0.01 - 0.05



- Recent Drilling
Historic Drilling

Golden Hand & Puma

Golden Hand & Stranger Target

Broad intercepts support open-pit potential. Examples:

- ✚ 18m @ 2.58 g/t Au from 5.6m, incl. 7.5m @ 5.64 g/t Au and 1.5m @ 20.88 g/t Au (25DDH-SEL-0021)
- ✚ 5.75 m @ 1.20 g/t Au from 61 m (25DDH-SEL-008)
- ✚ 3.85 m @ 2.71 g/t Au from 101.15 m (25DDH-SEL-006)
- ✚ 4.1m @ 1.35 Au g/ from 40.6m (25DDH-SEL-001)
- ✚ 50.1m @ 0.30 Au g/ from 52.9m, incl. 2.1m @ 1.49 Au g/t (25DDH-SEL-011)
- ✚ 24.2m @ 0.24 Au g/t from 55m, incl. 2m @ 1.32 Au g/t from 58.7m (25DDH-SEL-010)
- ✚ 7.5 m @ 1.05 g/t Au from 13.5 m, incl. 3 m @ 1.93 g/t (25DDH-SEL-004)
- ✚ 6.3m @ 1.17 g/t Au from 67.3 m (25DDH-SEL-0014)
- ✚ 15.5m @ 0.83 g/t Au from 237.5 m, incl. 4m @ 2.13 g/t Au (25DDH-SEL-0014)

*Disclaimer: For the full drill results please click here: [LINK](#)

Golden Hand



Puma



Nassau Project

70% beneficial interest in 200km² orogenic gold Project with option to 100%.



Alluvial gold mining all around a central plateau.



Alluvial gold miners gradually moving up slope and into bedrock



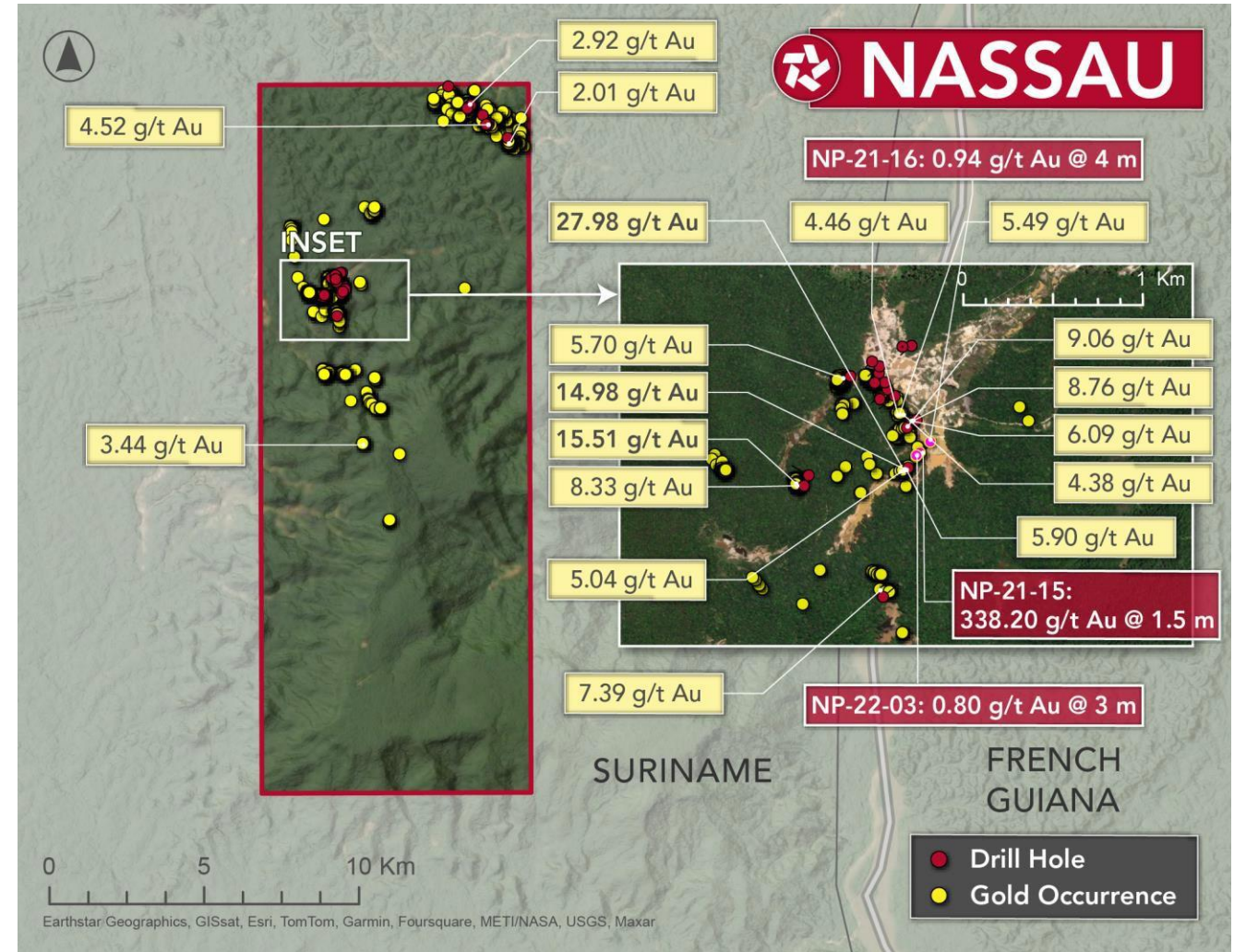
Ample vein sets exposed, with excellent grades.



Only a few hours by truck from Paramaribo, the capital of Suriname



10 km Southwest of Newmont's Merian Mine.



All sampling is historic and not verified by the Company. The reader is cautioned that grab samples are per definition and may not be representative of larger volumes of rock.

Nassau Project

The Nassau Project is located ~125 km SE of Paramaribo and ~100 km north of the Sela Project and is accessible via logging road. The Project is situated less than 10 km South of Newmont's Merian mine and along regional strike of Zijin's Rosebel mine. Total area of concession: 19,916 ha.

Witlage Target (Shown in Section)

Widespread high-grade quartz veins, surface sampling includes:

- 27.96 g/t Au over 1 m of quartz veins
- 31 of 65 surface samples are >0.5 g/t Au

Carbonara Target

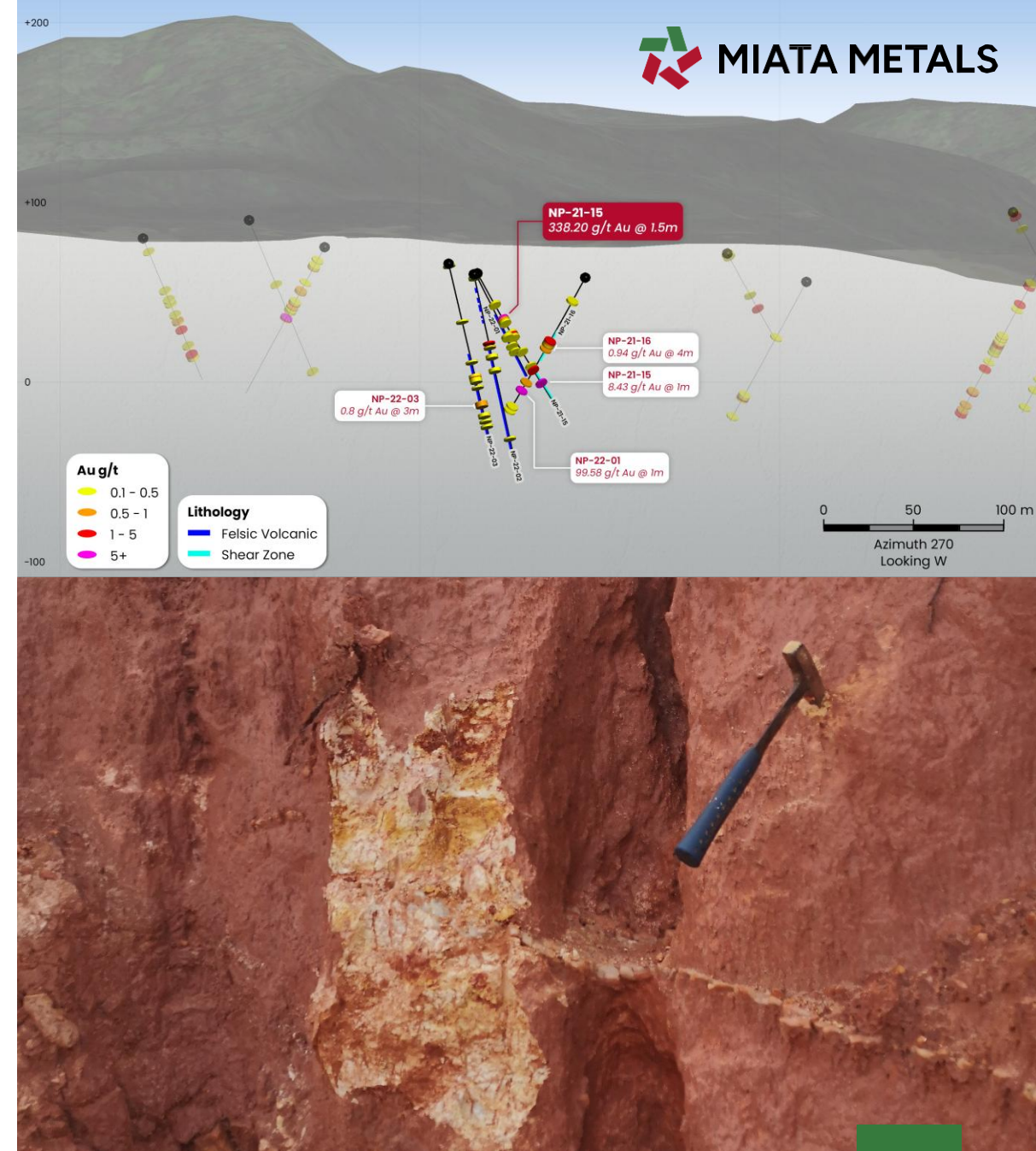
3 km long NW-trending geophysical anomaly, assumed to be a source of placer deposits:

- 4.52 g/t Au (highest assay)
- 250 samples (13 of which are >0.5 g/t Au)

Marinara Target

Gold-bearing auger samples contain up to 1.34 g/t over 8m and surface rock samples contain up to 3.44 g/t Au. Probable source for the Bamboo, Witlage, & bowl placer deposits (mined for the past century).

Historical data was not verified by the company. The reader is cautioned that grab samples are per definition selective and may not be representative of larger volumes of rock.



Achievements To Date





MIATA METALS



info@miatametals.com



www.miatametals.com



778-486-1500



#2133 – 1177 West Hastings Street,
Vancouver, British Columbia, V6E 2K3

